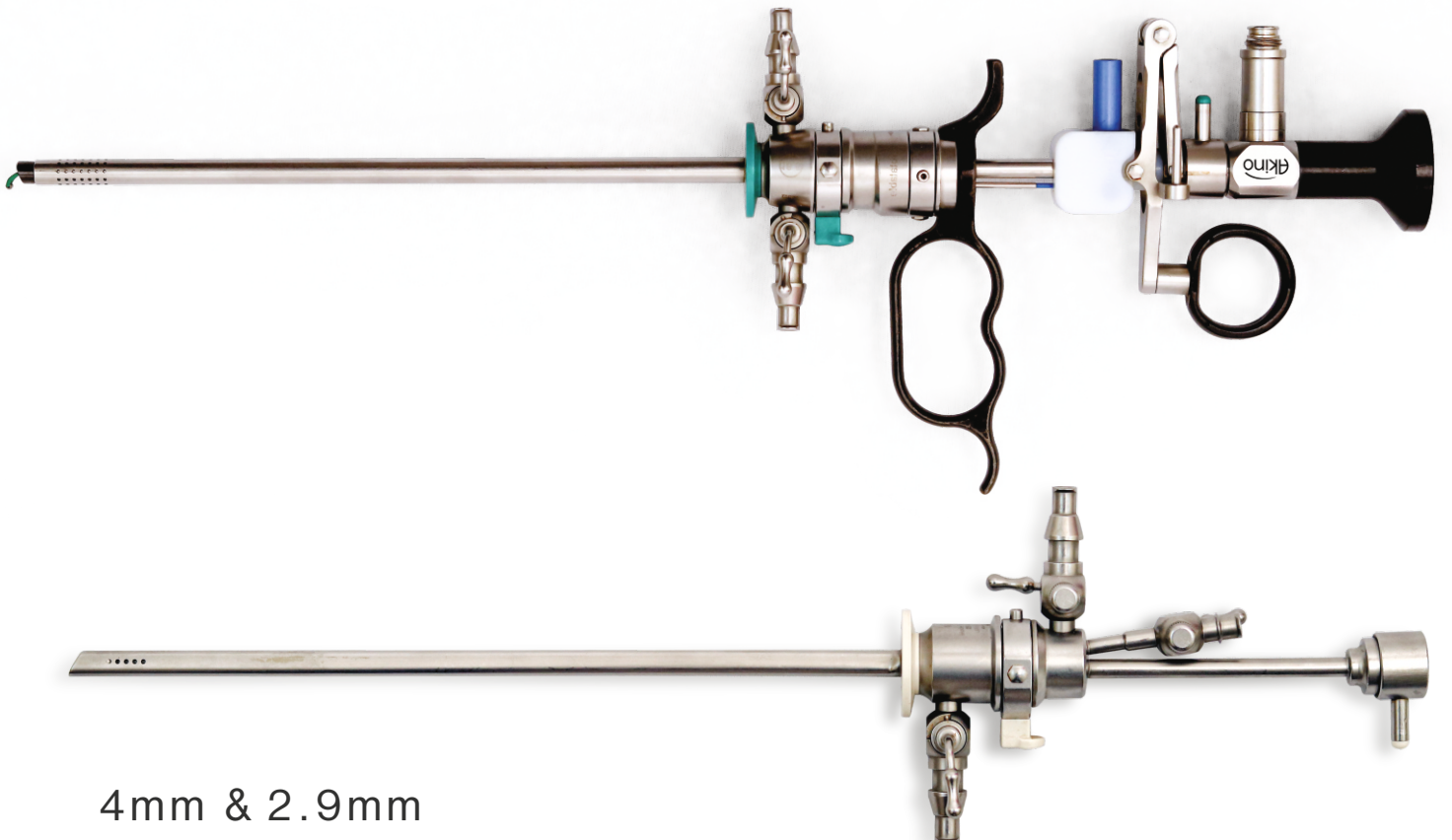


HYSTEROSCOPY

Akino
Surgery Simplified



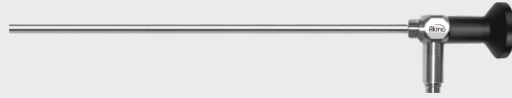
4mm & 2.9mm

4mm HYSTEROSCOPY

4mm Hysteroscope

0°/12°/30°, WL 300mm

Art No. 30° - 2040.3030H



- High Magnification HD optics
- Laser welded joints
- Sapphire tip for long life
- High transmission ratio for uniform brightness
- Medical grade stainless steel tube & body
- Glass cone for optimised illumination

Diagnostic Sheath For 4mm, 0°/30° Hysteroscope

Art No. DS 40.1000 / OB 40.1001



- Continuous flow for better vision
- Supplied with obturator
- Inner sheath 5.4mm, WL 260mm
- Outer Sheath 6.5mm, WL 240mm

Tear Drop Operative Sheath

Art No. OS 40.2002



- Continuous flow for better vision
- Tear drop shape sheath- less dilatation
- Good irrigation even with instrument inside
- Size Ø6.5mm, 0° / 30°, WL 192mm
- Working Channel - 5 CH
- Quick lock mechanism

Semi Rigid Forceps / Scissor



Serrated, cup
Art No. FF05.7001

Alligator
Art No. FF05.7002

Scissor
Art No. FF05.7003

BIPOLAR RESECTOSCOPE

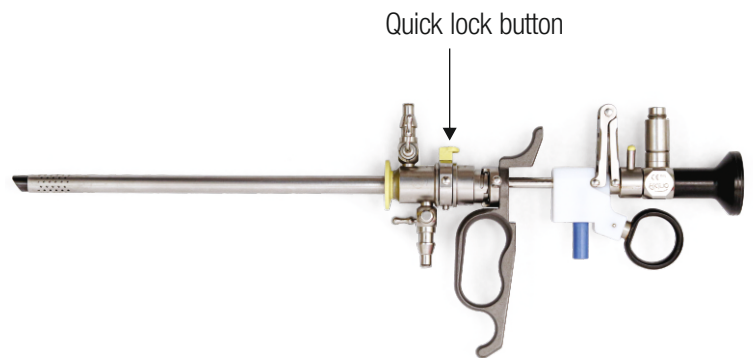
Advantages of Bipolar Resectoscope

- Saline resection, no risk of glycine
- Specially designed Bipolar electrodes for better cutting & coagulation
- Less blood loss

NOTE - Monopolar Resectoscope also available.

Features

- Resectoscope sheath for Continuous irrigation - 24/26 CH
- Passive Working Element for Monopolar or Bipolar
- Specially designed bipolar cable - BR 40.6007
- Bipolar & Monopolar electrodes with shapes - Roller, Knife, Loop
- Quick lock mechanism - No rotation of knob



Resectoscope Sheath With Obturator

Art No. BR 40.4004



Bipolar Working Element (Passive)

Art No. BR 40.3003



Bipolar Electrodes



Roller

2.9mm Art No. BE 29.5102 /
4mm Art No. BE 40.5007

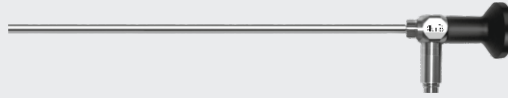
- Monopolar Electrodes Available on Request

2.9mm HYSTEROSCOPY

2.9mm Hysteroscope

0°/12°/30°, WL 300mm

Art No. 30° - 2029.3030H



- High Magnification HD optics
- Laser welded joints
- Sapphire tip for long life
- High transmission ratio for uniform brightness
- Medical grade stainless steel tube & body
- Glass cone for optimised illumination

Diagnostic Sheath

Art No. DS 29.1100 / OB 29.1101

- Continuous flow for better vision
- Inner sheath 4mm, WL 270mm
- Outer sheath 5mm, WL 240mm
- Supplied with obturator



Operative Sheath - Tear Drop Sheath For Less Trauma

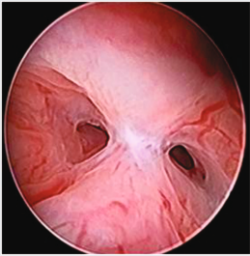
Art No. OS 29.2100

- Perfect irrigation even with instrument inside
- Outer sheath 5.0mm Tear drop shape, WL 192mm
- Working Channel 5 CH for inner sheath
- Continuous flow for better vision

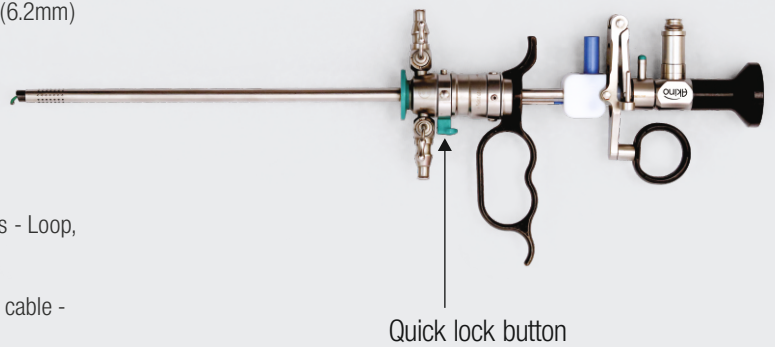


- Semi Rigid
- Long Life, Sturdy
- Medical Grade SS
- 1.6mm, 5 CH
- WL - 40cm

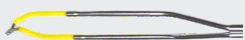
MINI BIPOLAR RESECTOSCOPE



- Bipolar enables saline resection, less trauma to cervix & reduced surgical time
- Smaller diameter 18.5 CH (6.2mm) for less dilatation
- Resectoscope sheath for Continuous irrigation
- Passive Working Element
- Long life Bipolar electrodes - Loop, Ball, Knife
- Specially designed Bipolar cable - BR 40.6007



Quick lock button



Knife

2.9mm Art No. BE 29.5101 /
4mm Art No. BE 40.5006



Loop

2.9mm Art No. BE 29.5100 /
4mm Art No. BE 40.5005

Resectoscope Sheath With Obturator

Art No. BR 29.4100



Bipolar Working Element

Art No. BR 29.3100





Akino Medical Pte Ltd

www.akinomedical.com

JAPAN:

Level 9 Ariake Frontier Building,
Tower B 3-7-26 Ariake, Koto-ku,
Tokyo 135-0063, Japan

Tel.: +81 3 5530 8429

Email: info.jp@akinomedical.com

SINGAPORE:

362, Upper Paya Lebar Road,
#04-09, Da Jin Factory building,
Singapore - 534963

Tel.: + 65 68087810

Email: info.sg@akinomedical.com

AKINO NEAREST REPRESENTATIVE

A large, empty rounded rectangular box with a thin black border, intended for the name of the Akino nearest representative.